

## OPERATING INSTRUCTION

Commutator BK - 4 (hereafter - device) is intended for operation jointly with **VIZIT** apartment doorphone as commutation device between the doorstation and apartment handsets.

### SPECIFICATIONS

Maximum number of connected handsets	<b>4</b>
Dimensions, mm	<b>135x75x35</b>
Weight, kg	<b>0.2</b>
Ambient temperature range	from <b>1°C</b> to <b>40°C</b>
Relative humidity	up to <b>93 % @ 25°C</b> .

### SAFETY INSTRUCTIONS

This device does not contain voltage above 15 VDC.

To avoid damage perform coding (see below) and connect wires when power is off.

### INSTALLATION

The device fastens either with a springing clip to a DIN - strip or with 2 screws (not included).

Up to 4 handsets may be connected to commutator's outputs via 2-wire cables. Handset's positive polarity wire must be connected to one of **LN** terminals (internally connected), while negative polarity wire – to one of **FA, FB, FC** or **FD** – terminals (outputs).

**LINE** (Intercom), **GND** (Ground), **EK** (Code) and **SEL** (Select) are input terminals of device and must be connected to the corresponding terminals of the doorstation.

Handsets may have apartment numbers of the same or adjacent decades, for example: **01 – 04** or **09 – 12** or **08 – 11**.

### CODING

Connect six jumpers (**DA, DD** and **EA, EB, EC, ED**) inside the commutator to proper output pins (**0...9**) of the apartment number decoder.

Note, that **DA** and **DD** jumpers determine the decade in apartment's number, while **EA, EB, EC, ED** jumpers determine the units in apartment's number.

If all apartment numbers are in the same decade (example: **№01, №02, №03, №04**), then P1 jumper must be in its place.

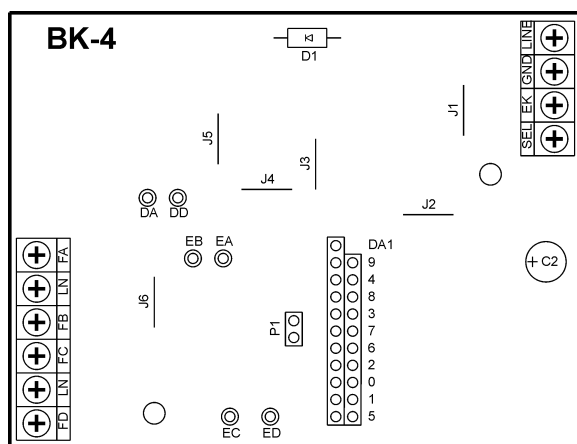
1. Connect **DA** jumper to **0** - pin. It determines **0** - decade for **FA, FB, FC, FD** outputs.
2. Connect **DD** jumper to **DA1** pin (same as **DA**).
3. Connect **EA, EB, EC, ED** jumpers to **1, 2, 3, 4** pins. They determine units (see above).  
Apartment numbers will be coded as follows: **FA - №1, FB - №2, FC - №3, FD - №4**.

If two apartments have numbers from one decade, while the rest two – from adjacent decade, (for example, **№08, №09, №10, №11**), then P1 jumper must be in its place.

1. Connect **DA** jumper to **0** - pin. It determines **0**- decade for **FA, FB** outputs.
2. Connect **DD** jumper to **1** - pin. It determines **1**- decade for **FC, FD** outputs.
3. Connect **EA, EB, EC, ED** jumpers to **8, 9, 0, 1** pins.  
Apartment numbers will be coded as follows: **FA - №8, FB - №9, FC - №10, FD - №11**.

If one apartment has number from one decade, while the rest three – from adjacent decade, (for example, **№10, №11, №12, №09**), then P1 jumper must be removed.

1. Connect **DA** jumper to **1** - pin. It determines **1**- decade for **FA, FB, FC** outputs.
2. Connect **DD** jumper to **0** - pin. It determines **0**- decade for **FD** output.
3. Connect **EA, EB, EC, ED** jumpers to **0, 1, 2, 9** pins.  
Apartment numbers will be coded as follows: **FA - №10, FB - №11, FC - №12, FD - №9**.



Board layout

